

How the KYTC Builds Roads



Year 0: Long-Range Planning

- Identify/prioritize purpose & need
- Identify & address public concern
- Identify priorities for Six Year-Highway Plan



Year 1: Six-Year Highway Plan

- Project revenue for federal & state funds
- Break revenue into funding categories
- Match required state funds to federal funds
- Balance all fund categories
- Determine projects & programs that can be funded with projected revenues

Current Phase



Years 2-3: Project Planning

- Determine project limits
- Verify funding needs
- Identify public concerns
- Verify project needs
- Identify project goals
- Identify environmental concerns
- Coordinate with resource agencies
- Make project recommendations



Years 4-5: Preliminary Design & Environmental Analysis

- Conduct field surveys
- Inventory existing resources to identify protected, endangered & important resources
- Identify & address public concerns by conducting meetings & distributing reports
- Develop alternatives
- Prepare environmental documentation



Years 6-7: Final Design

- Develop final alignments
- Develop right-of-way needs
- Drill for soil & rock samples
- Identify & address public comments
- Review environmental commitments
- Develop construction plans



Year 8: Right-of-Way Purchase (Land Acquisition)

- Determine property values
- Meet with property owners
- Address property owner concerns
- Make offers & buy property
- Sign deeds
- Assist with relocations



Year 9: Utility Relocation

- Move utilities out of construction zone
- Pay utility companies for relocations



Year 10: Construction

- Address public concerns
- Construct roadway
- Fulfill environmental commitments
- Maintain traffic

Years 11+: Maintenance

- Remove snow & ice
- Patch potholes & resurface
- Mowing & many other items

PUBLIC MEETING

Guthrie Planning Study

KYTC Item #3-8630.00

September 29, 2011



The Kentucky Transportation Cabinet (KYTC) is seeking your input on potential roadway improvements to the Tiny Town area of southern Todd County. The project team has developed preliminary information and conceptual alternatives to redesign roads in the area.

The purpose of this public meeting is to share this information with you, listen to your concerns, and to get your input about the options under consideration.





Why is this study needed?

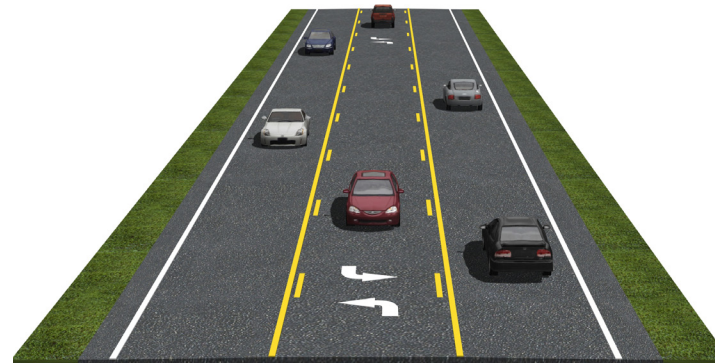
Directly west of Guthrie, Kentucky is a triangular area known as Tiny Town where US 41, US 79, KY 181, KY 294, and KY 2128 come together. This junction of roadways results in a less than efficient “knot” of intersections with multiple safety concerns. The study area’s location along two rail lines and two major US highways (US 41 and US 79), as well as its proximity to I-24, provides it with strong potential for growth. The major investment in the Hemlock Semiconductor Plant on US 79 (just to the south of the Tennessee state line) will have a potential employment of 5,000 employees and is anticipated to attract satellite industries which will utilize its products. Further residential and commercial development is likely to follow and the demand for travel through the Tiny Town junction is expected to increase.

The purpose of a potential project or multiple projects is to improve the safety and efficiency of travel through the intersections of KY 181 with US 79, KY 294, and US 41 and the intersections of US 79 with US 41 and with KY 2128 in the Guthrie area. Such projects will also provide better connections for travelers along this existing transportation network to the emerging industrial development.

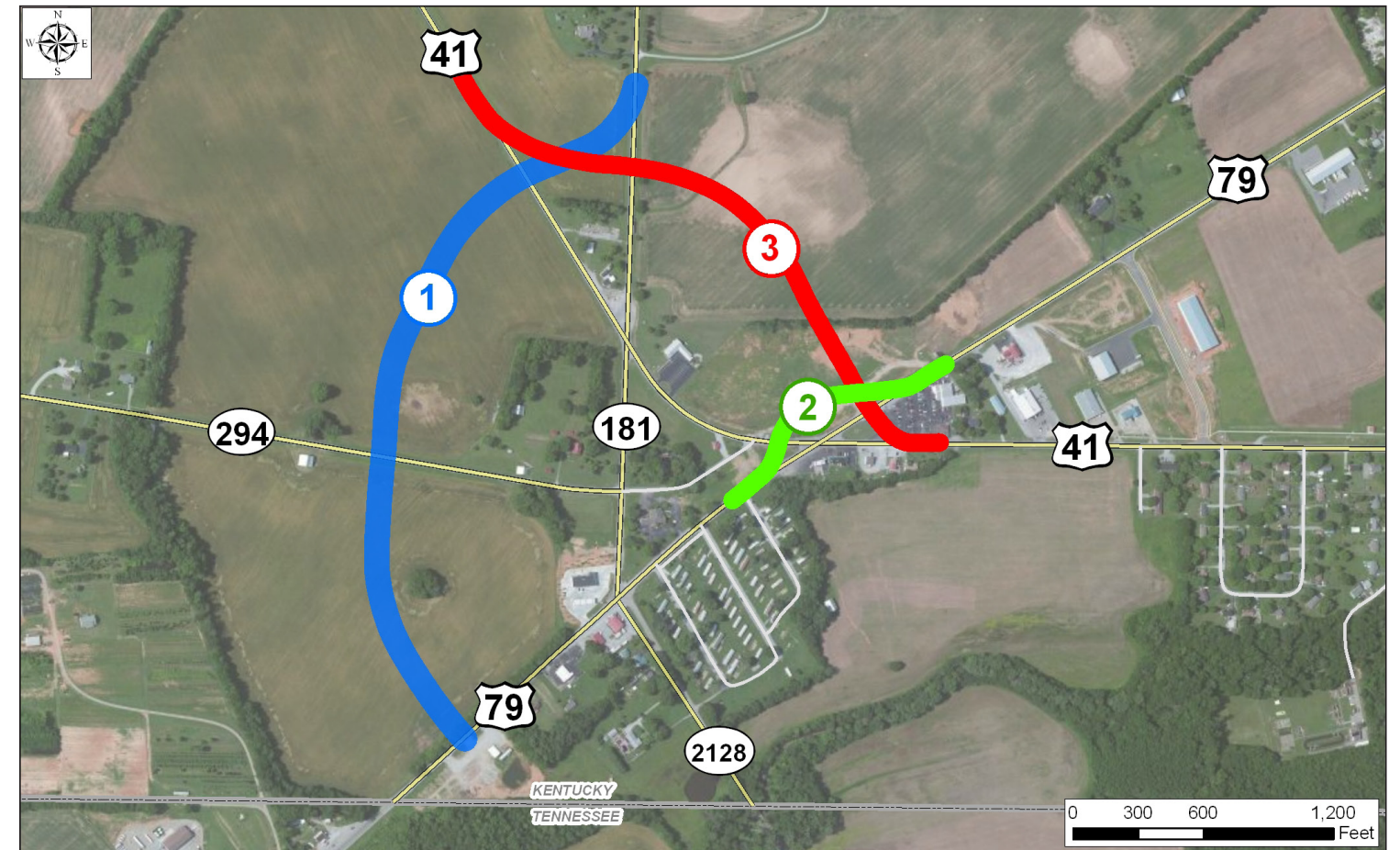
What kinds of improvements are planned?

Short-term improvements under consideration include: constructing left-turn lanes on US 79 at KY 181, reconfiguring the US 41 and KY 181 intersection, introducing traffic calming measures on Graysville Road, and constructing curbs along US 41 and US 79 near the Minit Mart.

Long-term improvements include: realigning US 41, KY 81 and/or US 79 (as shown on the following page). Each realignment option would create a three-lane road with two lanes in each direction and one continuous turn lane (as shown below).



Long-Term Alternatives Under Consideration



Project	Description	Length	Cost*
1. Realign KY 181	Realign KY 181 from north of US 41 to US 79 west	0.8 Miles	\$3.8
2. Realign US 79	Realign US 79 west of the existing US 41 intersection	0.2 Miles	\$2.3
3. Realign US 41	Realign US 41 from west of KY 181 to east of US 79 intersection	0.6 Miles	\$2.8
4. Realign KY 181 & Realign US 79	Realignment of KY 181 and realignment of US 79	1.9 Miles	\$6.3
Widen KY 294	Widen to two 11-foot lanes from KY 181 west to Tennessee state line	3.0 Miles	\$9.3
			Total \$30.3

*Costs are approximate and in millions of dollars

For more information, please contact:

Jeff Moore, AICP
 Planning Supervisor
 KYTC District 3

270-746-7898
 jeff.moore@ky.gov

Brian Aldridge, PE
 Project Manager
 ENTRAN

502-213-7564
 baldridge@entran.us

